

International manufacturer of MDF and high-quality timber

Result.

MDF plant - Environmentally friendly production of MDF and laminate.



REZULT MDF plant is:

- A state-of-the-art manufacture which is located in Ukraine - the region rich in resources
- An innovative quality control system
- A wide distribution network in European and Asian countries

REZULT MDF plant is a state-of-the-art manufacture which is located in Ukraine

Volume
production
of MDF and HDF boards

900

m³ per day

300 000

m³ per year



Completely new equipment launched only in 2011

The technological MDF line of German company Siempelkamp
Laminating line Wemhoner
Line cutting laminate Homag

The additional accessorize is also carried out by Siempelkamp
Company with application of equipment of such giants as
Metso, Buttner and others

Volume
production of the
laminare

6 mln

m² per year



The ContiRoll press has been installed, length 35.4 meters.

This press construction allows to carry out a press procedure
continuously with pressure distribution at press's length as
well as across the width, and as a result it leads to the
capacity growth, and the reduction of raw materials
consumption and high quality products.

REZULT MDF plant is a state-of-the-art manufacture which is located in Ukraine

Enterprise includes all that is needed for the production of quality products, launched its own production of resins with a maximum capacity of

150 tons per day

This allows 100% to cover the needs of the plant, as well as makes it possible to operate with maximum flexibility characteristics of the products in the price / quality ratio, and perform any additional customer requirements for product safety.



One of the strengths of the plant is a high quality natural raw materials. For production use only certified, non-business softwood timber and non-timber waste.

As well as a warehouse which is designed for one-time storage of up to 70 thousand. Cubic meters of wood, which ensures uninterrupted operation of the company for the past

2 months

REZULT MDF plant is a state-of-the-art manufacture which is located in Ukraine

Working
places

400

Work
ceaselessly

24

hours



Production is fully compliant with international quality standards

ISO 9001, ISO 14001

In 2015, successfully passed a comprehensive audit of the conformity of production with ISO 9001.

In 2014 Korostensky MDF plant improved production.

Started the production of water-resistant MDF (HLS). The quality meets all European standards. The plate has a thickness of 8 mm, 10 mm, 12 mm and 16 mm.

Area plant

40

hectare

The amount
of investment

170

€ million



In addition to the technological line for the production of MDF and laminate, the plant has a large storage space, which

**is more than 32 thousand sq. meter
warehouse for finished products**

The finished product at this stage goes to dealers and by car, rail and containers.

Our quality is based on the seven basic principles.

REZULT brought the quality of the goods to perfection by strictly following these standards

1

REZULT PRO Quality Absolute control

An international team of experts provides control at all stages of the production, starting from raw material input to the final product delivery to a Customer

2

REZULT PRO Technology Modern technologies

We use innovative techniques and engineering development at our plants.

3

REZULT PRO Enterprise Full automation

One of the most powerful and progressive production lines in Europe with high precision European equipment

4

REZULT PRO Material High-quality raw materials

All REZULT products are made of certified timber only

5

REZULT PRO Ecology Exploitation safety

Safety and ecological properties of products and production units are confirmed by the appropriate certificates and meet all the requirements of international norms and standards

6

REZULT PRO Customer focus Our business processes are managed by the “voice of client”

Effective consumer satisfaction and prompt respond to all their wishes

7

REZULT PRO Reliability Honest guarantee

REZULT is a guarantee of stability in the everything, starting from partnership relations to the quality and on-time delivery

The REZULT is not just a high-quality material.
The REZULT is a guarantee that you will have a solid foundation under your feet and confidence that you've made a right choice.

Sales Geography



REZULT sells its products in Ukraine and in 15 different countries, such as: Russia, Kazakhstan, Uzbekistan, Azerbaijan, Iran, Turkey, Tunisia, Canada, Saudi Arabia.

MDF products

MDF and HDF boards

- **MDF boards laminated and sanded;**
- With one-sided and double-sided lamination;
- MDF with a standard density of 730 - 880 kg / m³;
- Sanded MDF boards thicknesses from 3 to 40 mm;
- Laminated MDF boards thicknesses:
 - one - sided from 10 to 25
 - two - sided from 16 to 19
- It is fully compliant with the European standard EN622-5 with formaldehyde, a Class E1 toxicity.



- **HDF** with a density of 900 kg / m³
- HDF boards thicknesses from 3 to 10 mm
- It is fully compliant with the European standard EN622-5 with formaldehyde, a Class E1 toxicity.
- Started the production of **water-resistant MDF (HLS)**.
- The quality meets all European standards. The plate has a thickness of 8 mm, 10 mm, 12 mm and 16 mm.

Characteristics of laminate flooring

Laminate floor class 31 / AC3

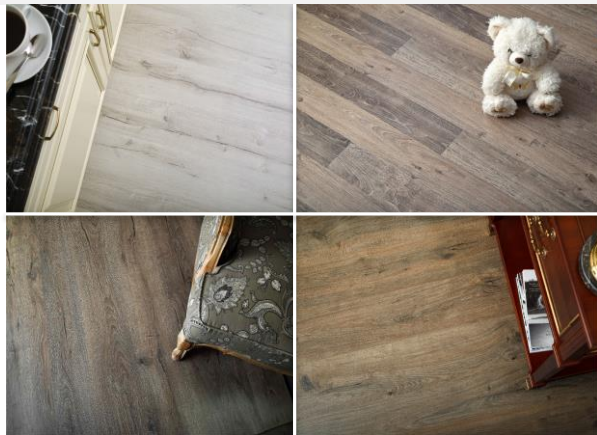
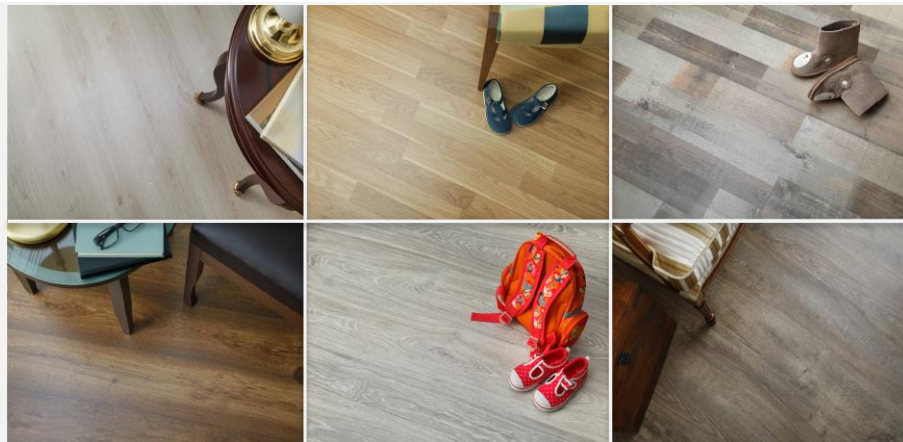
- Dimensions: 1380h191h 7 mm.

Laminate floor class 32 / AC4

- Dimensions: 1380h191h 8 mm.
- Dimensions: 1292h191h 8 mm.

Laminate Floor class 33 / AC5

- Dimensions: 1380h191h 10 mm.
- Dimensions: 1380h191h 8 mm.



- The density of the HDF-boards for AC3,AC4,AC5 from 880kg / m³,
- Plate meets all the requirements of European standard E1 corresponding class of toxicity.
- The unic locking system



Advantages



Ecologically clean



Resistant to damage



E1 class



Easy to clean



Heat resistant laminate



Colour stable



Compatible with underfloor heating



Unique locking system



Scratch resistant wheel of furniture



Scratch resistant



UV resistance

Ukrainian holding sawmilling company - environmentally friendly production of sawn timber and wood pellets.

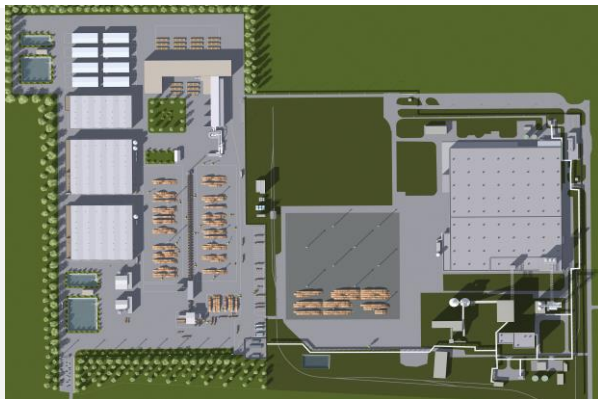


Sawmill Company - is a modern production equipment, large storage facilities and transportation network, is a unique quality control system

Modern production of sawmilling company

Area plant

36
hectare



In 2015 it was founded the largest project in Ukraine in timber production - Ukrainian holding sawmill company, which will produce high quality timber under the brand REZULT.

Working
places

400

Internal fleet - over

50

vehicles



Sawmill Company is ranked in the **top 10** largest sawmill sites in Eastern Europe

Modern production of sawmilling company

Annual pine logs
income

1,2 mln
m³



Saw line annual
capacity

660 000
m³
of sawn lumber



Drying annual
capacity

500 000
m³
of sawn lumber



Planing mill annual
capacity

400 000
m³
of planed lumber



Modern production of sawmilling company

Work
ceaselessly

24

hours

7

days per week



Equipment largest manufacturer of sawmill equipment
German company **LINCK** guarantees precision cutting $\pm 0,5$ mm, the perfect geometry of the timber and the highest useful output among similar equipment.

Drying of the Austrian company **Mühlböck** cameras allow you to achieve the highest quality of drying with minimum energy consumption.

Over
100 mln Euro
have been invested in
the project



The main products of the plant is the sort timber.

Two lines **SPRINGER** lumber sorting loft, length and quality to satisfy the wishes of any customer.

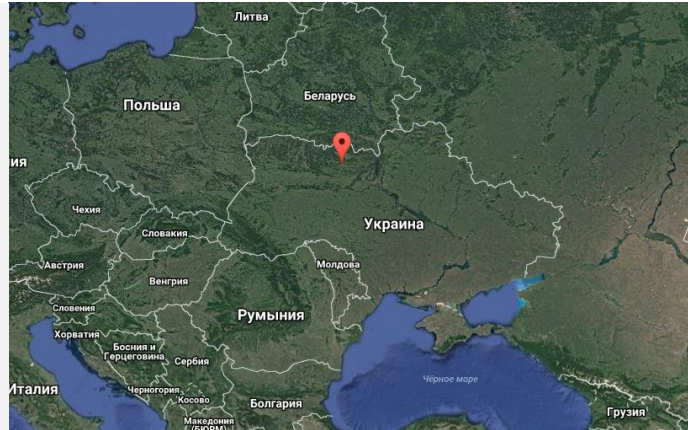
A quality control system **MICROTEC** avoids errors inherent in the "human factor".

Sawmill Company has a perfect location in terms of logistics and shipping of finished products anywhere in the world

The finished product is delivered by rail road and sea transport

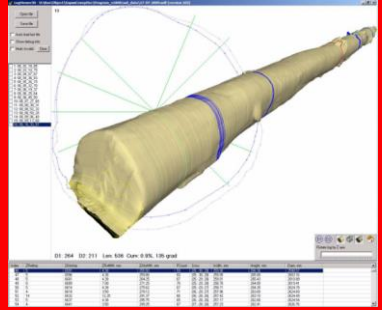
Distance to the
sea port of
Odessa -
600
km

The connection to
the largest railway
hub in western
Ukraine - Korosten

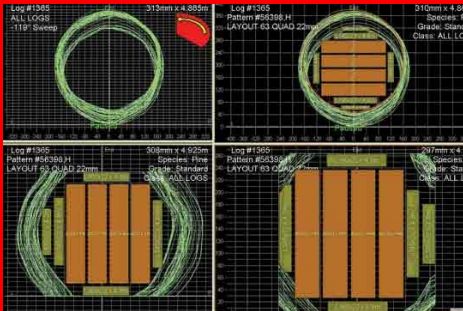


Connection to one of
the main highways
connecting Europe
and Asia - E373

The distance to
the border with
the European
Union
315
km



Sawmill products



Sawn timber

UHLK will produce pine boards and beams, since September 2016 the following characteristics

dimensions	Minimum [mm]	Maximum [mm]
Length	800	5100
Thickness	15	190
Width	45	350



timber	Planed boards and beams (from 2017)	Laminated products (from 2017)
natural humidity	S4S	Cross laminated
chamber drying	Profiled	DuoLam
		TrioLam
		FingerJointed

Pellets

Fuel pellets - energy, raw materials for which are waste own sawmill production. It is a cylindrical pellets of standard size.

Types of pellets produced pellets

6 mm pellets

8 mm pellets



The final pellets are packed in different packaging - from small packages (2-20 kg) to big-bags (big industrial packing) weighing 1 st ton - or delivered to the consumer in bulk.

Thank you for attention!