



Rezult.[®] **STAND
ON
QUALITY**

REZULT DOORS

Rezult.[®]

Rezult Doors are made at BF ENGINEERING LLC in Korosten city. The technical equipment of the plant includes everything necessary for the production of high-quality European products. Rezult Doors comply with European standards, and German production lines companies controlled by European specialists. Rezult company is constantly expands the product line, used in the arrangement of residential premises and in 2019 were released interior doors in collections.



Enamel Line	4
Enamel Classic	6
Enamel Step	8
Enamel Crystal	10
Consul Lux	12
Consul Prestige	14
Consul Castel	16
Consul Vitrage	18
Ecoline	20
Mouldings	22

Contents



Enamel Line



R

A collection of enamel painted doors in a minimalistic Scandinavian style. The collection will decorate the design of your premises, harmonizing laconically with various basic solutions.

Enamel painted door collection of a high-quality finish.

Glossy type coating without texture, smooth.

High-quality enamel made in Europe, Slovenia.

The door structure is made on the basis of a composite frame of engineering pine fittings.

The door plane is made of 6 mm MDF.

The door edge of a 0.5 mm thickness protects the structure from four sides, which makes the door structure moisture resistant.

A hollow core wood filling of a small alveolate.

This door construction provides strength, resistance to deformation, density of the structure for reception.

The door structure is produced on automatic lines.



Flata



Dera



Ilva



Mira



Galla



Lana



Alpha



Gamma



Cuba



Enamel Classic



R

A collection of enamel painted doors in a classic, calm style. The minimalistic solution of the door pattern will emphasize the classic style of the room design.

Enamel painted door collection of a high-quality finish.

Glossy type coating without texture, smooth.

High-quality enamel made in Europe, Slovenia.

The door structure is made on the basis of a composite frame of engineering pine fittings.

The door plane is made of 6 mm MDF.

The door edge of a 0.5 mm thickness protects the structure from four sides, which makes the door structure moisture resistant.

A hollow core wood filling of a small alveolate.

This door construction provides strength, resistance to deformation, density of the structure for reception.

The door structure is produced on automatic lines.



Oslo



Sophia



Warsaw



Prague



London



Enamel Step



Collection of enamel doors in a modern style. The classic base and stepped pattern give the door a stylish look. This collection is well suited to the design formats of the basic directions, consisting of mixes.

Enamel painted door collection of high-quality finish.
Glossy type coating without texture, smooth.
High-quality enamel made in Europe, Slovenia.
The design of the door is made on the basis of a composite frame with mortgages of engineered pine fittings.
The area of a door is made of MDF of 16 mm.
The door edge of a 0,5 mm thickness protects the structure moisture resistant.
An engineering board filling made of MDF and pine.
The door structure is produced on automatic lines with manual revision.





Step 1



Step 2



Step 3



Step 4



Step 5



Enamel Crystal



A collection of enamel painted doors with glossy glass. A collection of enamel painted doors with a glossy glass insert, painted on the back in the color of the door. The collection is distinguished by its simplicity of design and expressiveness due to the uniformity of the color of the glass and the door. It harmonizes well with minimalistic design, as well as with solutions for decorating a room with bright glossy materials.

Enamel painted door collection of a high-quality finish.

Glossy type coating without texture, smooth.

The glass is painted in the color of the door on the back side. Glossy glass.

High-quality enamel made in Europe, Slovenia.

The door structure is made on the basis of a composite frame of engineering pine fittings.

The frame is reinforced for glass.

The door plane is made of 6 mm MDF.

The door edge of a 0.5 mm thickness protects the structure from four sides, which makes the door structure moisture resistant.

A hollow core wood filling of a small alveolate.

This door construction provides strength, resistance to deformation, density of the structure for reception.

The door structure is produced on automatic lines.





Crystal 1



Crystal 2



Crystal 3



Crystal 4



Crystal 5



Crystal 6



Crystal 7



Crystal 8



Crystal 9



Consul Lux



The premium, innovative collection of doors combines elements of palace classics, a calm Scandinavian approach to shapes and structures, and a bright, bold Italian style of door fashion. The collection will emphasize the status of the owner. Will add a good mood to those present. The floating panel and contour lumen, gives the room a subtle note. Locally fits into any type of design. Will be a bright element of the room. The collection goes with the collections: Consul Prestige, Consul Castel and Consul Stained Glass. In large houses and multi-room premises, combining these collections expands the possibilities of expressing the style and design of the room.

Enamel painted door collection of high-quality finish.
Glossy type coating. Glass 4 mm two-sided satin.
High-quality enamel made in Europe, Slovenia.
The door structure is made on the basis of a reinforced composite frame of engineered pine fittings.
The door plate is made of sandwich with deep milling of elements up to 16 mm. Panel thickness is 16 mm.
The door edge of a 0,5 mm thickness protects the structure from four sides, which makes the door structure moisture resistant.
An engineering board filling made of MDF and pine.
The door structure is produced on automatic lines with manual revision.

R



Consul Lux 1



Consul Lux 2



Consul Lux 3



Consul Lux 4



Consul Prestige



A premium, innovative door collection that combines elements of the palace classics, calm Scandinavian approach to forms and structures, bright and venturesome Italian style of door fashion. The collection will highlight the status of the owner. It will give a good mood to those present. The floating panel and the contour daylight will give a sophisticated note to the room. It will fit neatly into any type of design. It will be a bright element of the room. The collection goes well with the collections: Consul Lux, Consul Castel and Consul Stained Glass. In large houses and multi-room premises, combining these collections expands the possibilities of expressing the style and design of the room.

Enamel painted door collection of a high-quality finish.
Glossy type coating. Glass of 4 mm double-sided satin.
High-quality enamel made in Europe, Slovenia.
The door structure is made on the basis of a reinforced composite frame of engineering pine fittings.
The door plane is made of sandwich with deep milling of elements up to 16 mm. Panel thickness is 16 mm.
The door edge of a 0.5 mm thickness protects the structure from four sides, which makes the door structure moisture resistant.
An engineering board filling made of MDF and pine.
The door structure is produced on automatic lines with manual revision.



Consul Prestige 1



Consul Prestige 21



Consul Prestige 22



Consul Prestige 31



Consul Prestige 32



Consul Prestige 41



Consul Prestige 42



Consul Castel



A premium, innovative door collection that combines elements of the palace classics, calm Scandinavian approach to forms and structures, bright and venturesome Italian style of door fashion. The deep and expressive design of the milling elements will give the room a sophisticated note and will neatly fit into any type of design. It will be a bright element of the room. The collection goes well with the collections: Consul Lux, Consul Prestige and Consul Stained Glass. In large houses and multi-room premises, combining these collections expands the possibilities of expressing the style and design of the room.

Enamel painted door collection of a high-quality finish.

Glossy type coating.

High-quality enamel made in Europe, Slovenia.

The door structure is made on the basis of a reinforced composite frame of engineering pine fittings.

The door plane is made of sandwich with deep milling of elements up to 16 mm.

The door edge of a 0.5 mm thickness protects the structure from four sides, which makes the door structure moisture resistant.

An engineering board filling made of MDF and pine.

The door structure is produced on automatic lines with manual revision.



Castel 1



Castel 2



Castel 3



Castel 4



Consul Vitrage



A premium, innovative door collection that combines elements of the palace classics, calm Scandinavian approach to forms and structures, bright and venturous Italian style of door fashion. It will fit neatly into any type of design. It will be a bright element of the room. The collection goes well with the collections: Consul Prestige, Consul Castel and Consul Stained Glass. In large houses and multi-room premises, combining these collections expands the possibilities of expressing the style and design of the room.

Enamel painted door collection of a high-quality finish.
Glossy type coating. Glass of 4 mm double-sided satin with double-sided pattern.
High-quality enamel made in Europe, Slovenia.
The door structure is made on the basis of a reinforced composite frame of engineering pine fittings.
The door plane is made of sandwich with deep milling of elements up to 16 mm.
The door edge of a 0.5 mm thickness protects the structure from four sides, which makes the door structure moisture resistant.
An engineering board filling made of MDF and pine.
The door structure is produced on automatic lines with manual revision.



Consul Vitrage 1



Consul Vitrage 2



Consul Vitrage 3



Consul Vitrage 4



Ecoline



A collection of doors in wood decors with a modern, restrained approach to structure, with a bright note of woody textures. There are 8 wood decors for your attention. Films made in Germany, the quality and beauty of the decor can only be assessed by examining the sample. The collection will decorate the design of your premises, harmonizing laconically with various basic solutions.

A collection of polypropylene doors of a high-quality finish.
The coating is structural, woody, heterogeneous in color.
Films made in German.

The door structure is made on the basis of a composite frame of engineering pine fittings.

The door plane is made of 6 mm MDF.

The door edge of a 0.5 mm thickness protects the structure from four sides, which makes the door structure moisture resistant.

A hollow core wood filling of a small alveolate.

This door construction provides strength, resistance to deformation, density of the structure for reception.

The door structure is produced on automatic lines.





Oak Gold



Oak Veralinga



Oak Salt



Dark Walnut



Oak Grey



Ash Flex



Ash White



Oak White

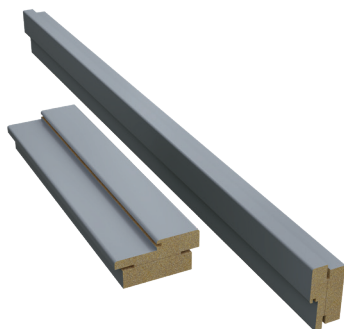


Mouldings



Sandwich frame 38
(MDF + pine)

2070x80x38 mm

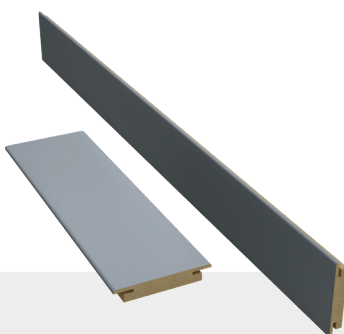


Frame 44
(MDF + MDF) for doors 40mm

2070x90x44 mm

Frame 44
((MDF + MDF) for doors 44mm

2070x90x44 mm



Extension 100

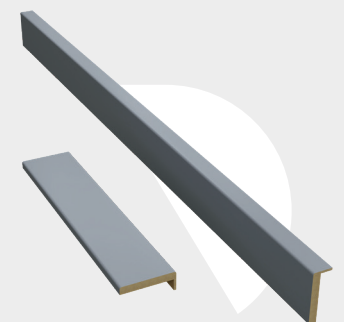
2070x100x16 mm

Extension 150

2070x100x16 mm

Extension 200

2070x100x16 mm



Architrave

2150x70x10 mm





Rezult Ukraine LLC
Yaroslaviv Val str.,38
01054 Kiev Ukraine
+ 38 (044) 277 15 90
office@rezult.pro
www.rezult.pro

® Rezult, The «Rezult» logo, «R» device and «Rezult» caption are all trade marks of RESULT INTERNATIONAL Limited, a company incorporated in England and operating from Greater Manchester, as the registered owner in the UK and in many other countries together with International Trade Marks. The owner has duly licenced RESULT UKRAINE LLC of Kyiv to use its trade marks for display in an approved manner in agreed territories and markets.