

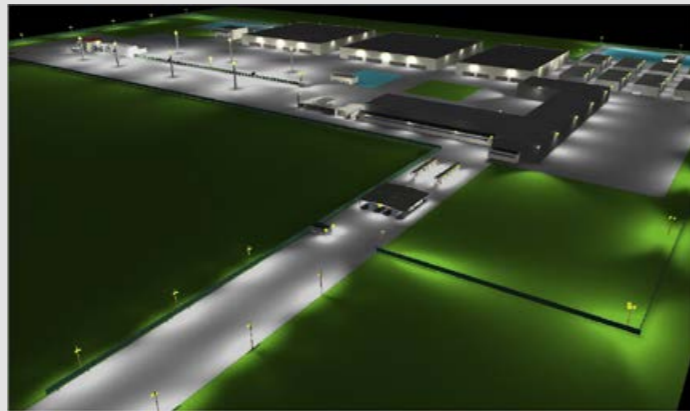
Result.[®]

**STAND
ON TIMBER
QUALITY**



The largest wood processing project in Ukraine was founded March 2015, by Kiev based UHLK- Ukrainian Sawmill Holding Company and will produce high quality sawn timber under the brand name RESULT.

Plant Area
36
hectare



With an annual input of 1,2 mln m³ of pine logs and a capacity of 660,000 m³ of sawn timber, the in Korosten, Zhytomyr region, located Sawmill will be among the largest sawmill enterprises in Eastern Europe.



Employees
600

Internal fleet
30
vehicles

A combination of high-tech and innovation – UHLK implements state-of-the-art wood processing equipment, large storage facilities and advanced quality control system into the sawmill project.

Annual input of
1,2 mln
m³ of pine logs



Saw line annual capacity
660 000
m³ of sawn timber

Dry kilns capacity
700 000
m³ of sawn lumber



Planing mill
annual capacity
670 000
m³ of sawn timber

The largest European manufacturer of woodprocessing equipment, i.e. German based company **LINCK** who guarantees sawing tolerances of $\pm 0,5$ mm, providing as well as perfect sawn timber geometry and highest recovery rates.

Operation
24
hours
7
days per week



Dry kilns supplied by Austrian company **MÜHLBÖCK**, providing the highest quality of drying with minimum energy consumption.

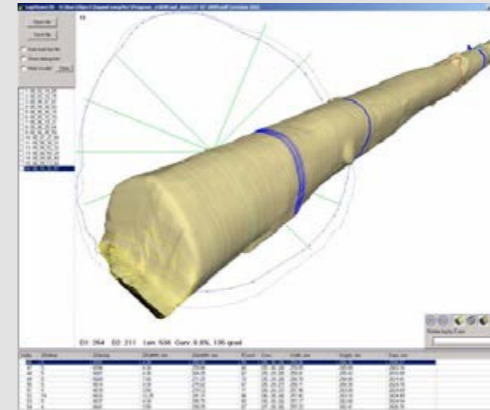


The amount
of investment over
200 mln
Euro

The plants main product is the graded KD sawn timber. Two **SPRINGER** sawn timber sorting and stacking lines are grading the sawn timber by quality and dimensions and guarantee a product sortiment in correspondence with the quality demands and standards of any customer.

A **MICROTEC** quality control system **limits the human factor to a minimum.**

Our products are in correspondence with almost all international quality standards such as ISO 9001, ISO 14001.



2 **REZULT PRO Technology**
Modern technologies

A healthy combination of high-tech state of the art equipment with innovation.

4 **REZULT PRO Material**
High-quality raw materials

All REZULT products are made of Certified timber only.

5 **REZULT PRO Ecology**
Exploitation safety

Safety and ecological properties of products and production units have been officially certified and meet international norms and standards.



1 **REZULT PRO Quality**
Absolute control

A team of international experts providing strict control at all stages of the Manufacturing process. Starting from raw material input ending with the delivery of the final product to the Customer.

3 **REZULT PRO Enterprise**
Full automation

One of the most powerful and progressive production lines in Europe equipped with high precision European equipment.



6 **REZULT PRO Customer focus**
Our business processes are managed by the "voice of the customer"

Highest customer satisfaction as a result of personalized customer service together with a strict 24 hour response policy.

7 **REZULT PRO Reliability**
Honest guarantee

REZULT is a guarantor for stability and quality. Starting from the partnership relations to the quality and on time delivery.

REZULT is more than a high- quality product.

REZULT is a guarantor for a solid foundation under your feed.

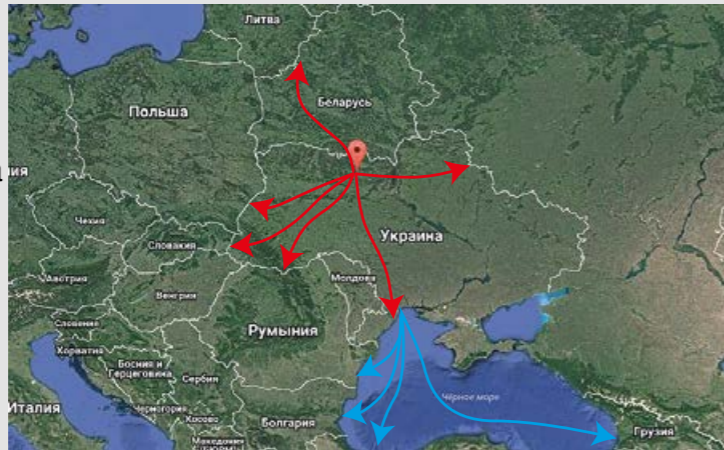
REZULT is providing its clients with the confidence that they have made the right choice.

UHLK is ideally located in terms of logistics.

Be it over land or over sea transport – the worldwide delivery is possible

The finished goods are to be delivered by over land transport such as rail road and trucks as well as sea transport by vessels.

Distance to the
Sea port of Odessa
600
km



The distance to
the European Union
border
315
km

The Odessa Sea Port is a big international commercial port, Which is situated in the North-West part of the Black Sea. With an annual cargo turnover of 25'585'800 tones the sea port is ranked within the top 3 of all ports situated in the Black sea region.



The connection to the largest railway hub in western Ukraine - Korosten

UHLK connects to one of the largest railway hubs in Western Ukraine – The Korosten railway terminal. The Korosten railway terminal is one of the most important railway junctions of the South Western railway network/ system.

UHLK is situated close to the
main highway which connects
Europe and Asia - E373



Sawn timber production start-up – 4Q 2016



dimensions	Minimum [mm]	Maximum [mm]
Length	800	5100
Thickness	16	190
Width	45	305



Sawn timber	Planed boards and beams (II half of 2017)	Laminated products (II half of 2017)
natural moisture content (GREEN)	S4S	Cross laminated
Kiln Dried (KD) (Kiln dried up to transport or furniture moisture content)	Profiled	DuoLam
		TrioLam
		FingerJointed



Rezult Ukraine,
11 Sagaidachnogo St
Kiiv, Ukraine 04070
Tel. +380(44)2204311
E-mail: info@rezult.pro
www.rezult.pro